

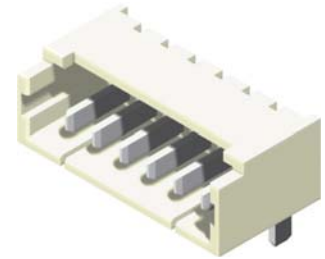


# CONNECTORS MANUFACTURE

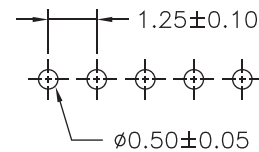
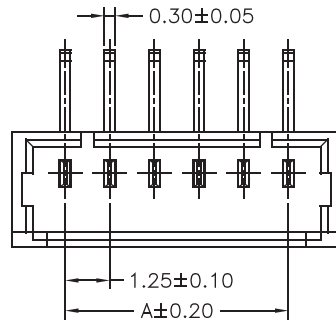
## 1.25mm Wafer Right Angle / Straight Type

### Specifications

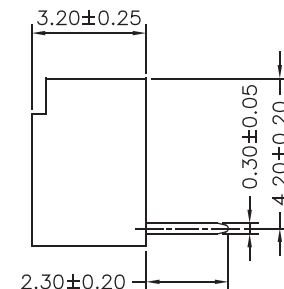
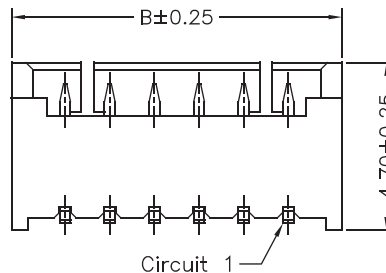
Current Rating: 1A AC,DC  
 Voltage Rating: 125V AC,DC  
 Temperature Range: -25°C to +85°C  
 Contact Resistance: 20mΩ Max  
 Insulation Resistance: 100MΩ Min  
 Withstanding Voltage: 500V AC/minute  
 Terminal: Phosphor Bronze / Tin Plated  
 Material: Nylon 6T, UL94V-0



Part No.	Dimensions	
	A	B
1250R-02TW-U	1.25	4.25
1250R-03TW-U	2.50	5.50
1250R-04TW-U	3.75	6.75
1250R-05TW-U	5.00	8.00
1250R-06TW-U	6.25	9.25
1250R-07TW-U	7.50	10.50
1250R-08TW-U	8.75	11.75
1250R-09TW-U	10.00	13.00
1250R-10TW-U	11.25	14.25
1250R-11TW-U	12.50	15.50
1250R-12TW-U	13.75	16.75
1250R-13TW-U	15.00	18.00
1250R-14TW-U	16.25	19.25
1250R-15TW-U	17.50	20.50
1250R-16TW-U	18.75	21.75
1250R-17TW-U	20.00	23.00
1250R-18TW-U	21.25	24.25



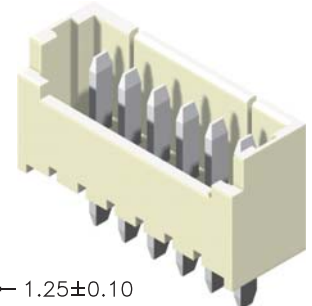
P.C.B LAYOUT



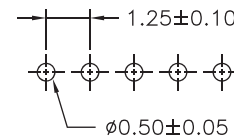
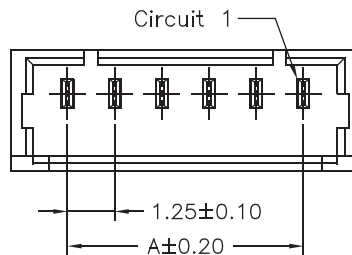
Part No.:1250R-XXTW-U

### Specifications

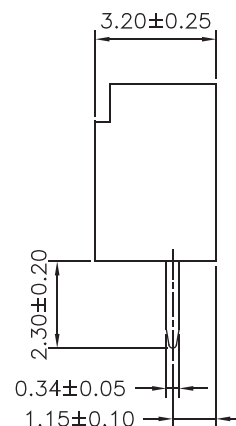
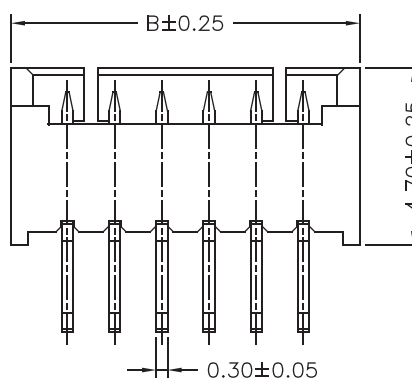
Current Rating: 1A AC,DC  
 Voltage Rating: 125V AC,DC  
 Temperature Range: -25°C to +85°C  
 Contact Resistance: 20mΩ Max  
 Insulation Resistance: 100MΩ Min  
 Withstanding Voltage: 500V AC/minute  
 Terminal: Phosphor Bronze / Tin Plated  
 Material: Nylon 6T, UL94V-0



Part No.	Dimensions	
	A	B
1250S-02TW-U	1.25	4.25
1250S-03TW-U	2.50	5.50
1250S-04TW-U	3.75	6.75
1250S-05TW-U	5.00	8.00
1250S-06TW-U	6.25	9.25
1250S-07TW-U	7.50	10.50
1250S-08TW-U	8.75	11.75
1250S-09TW-U	10.00	13.00
1250S-10TW-U	11.25	14.25
1250S-11TW-U	12.50	15.50
1250S-12TW-U	13.75	16.75
1250S-13TW-U	15.00	18.00
1250S-14TW-U	16.25	19.25
1250S-15TW-U	17.50	20.50
1250S-16TW-U	18.75	21.75
1250S-17TW-U	20.00	23.00
1250S-18TW-U	21.25	24.25



P.C.B LAYOUT



Part No.:1250S-XXTW-U

Housing wafer Terminal

